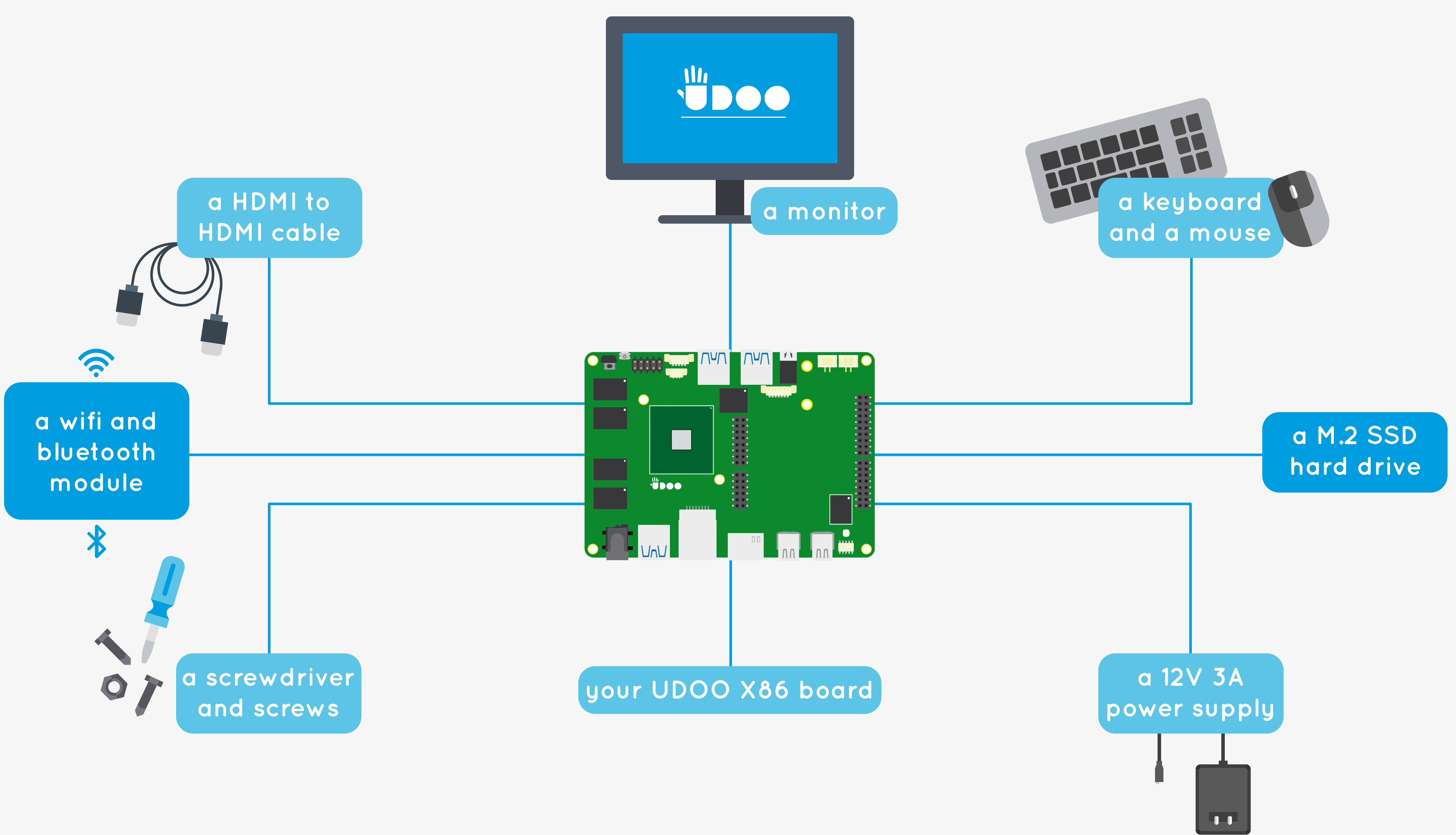




X86

GETTING STARTED

1 What do you need?

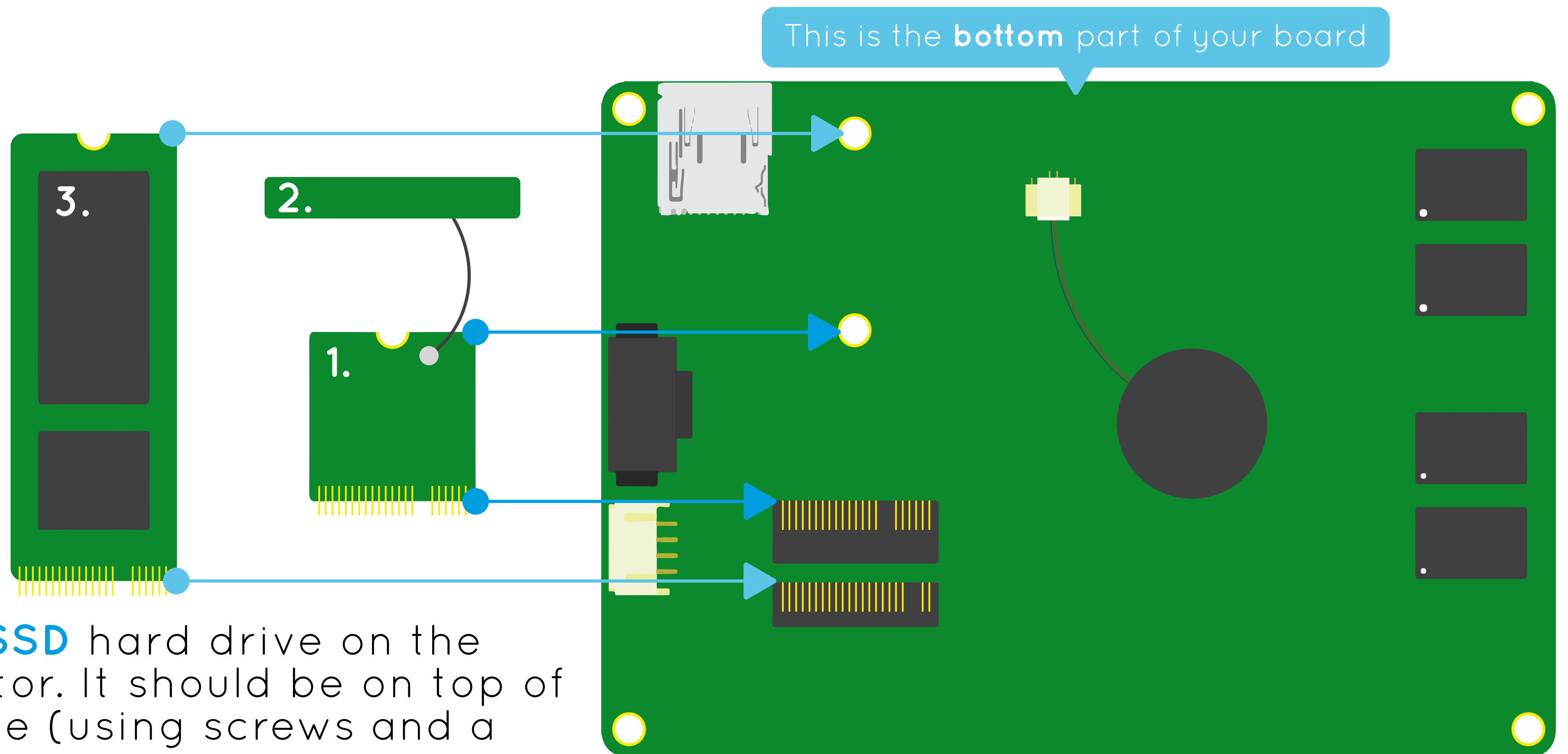


2 Mounting of the wifi and bluetooth module (with the M.2 SSD)

1. Place the **wifi and bluetooth module** using screws and a screwdriver

2. Stick the antenna to the **A connector** (1.)

3. Place the **M.2 SSD** hard drive on the higher connector. It should be on top of the first module (using screws and a screwdriver)



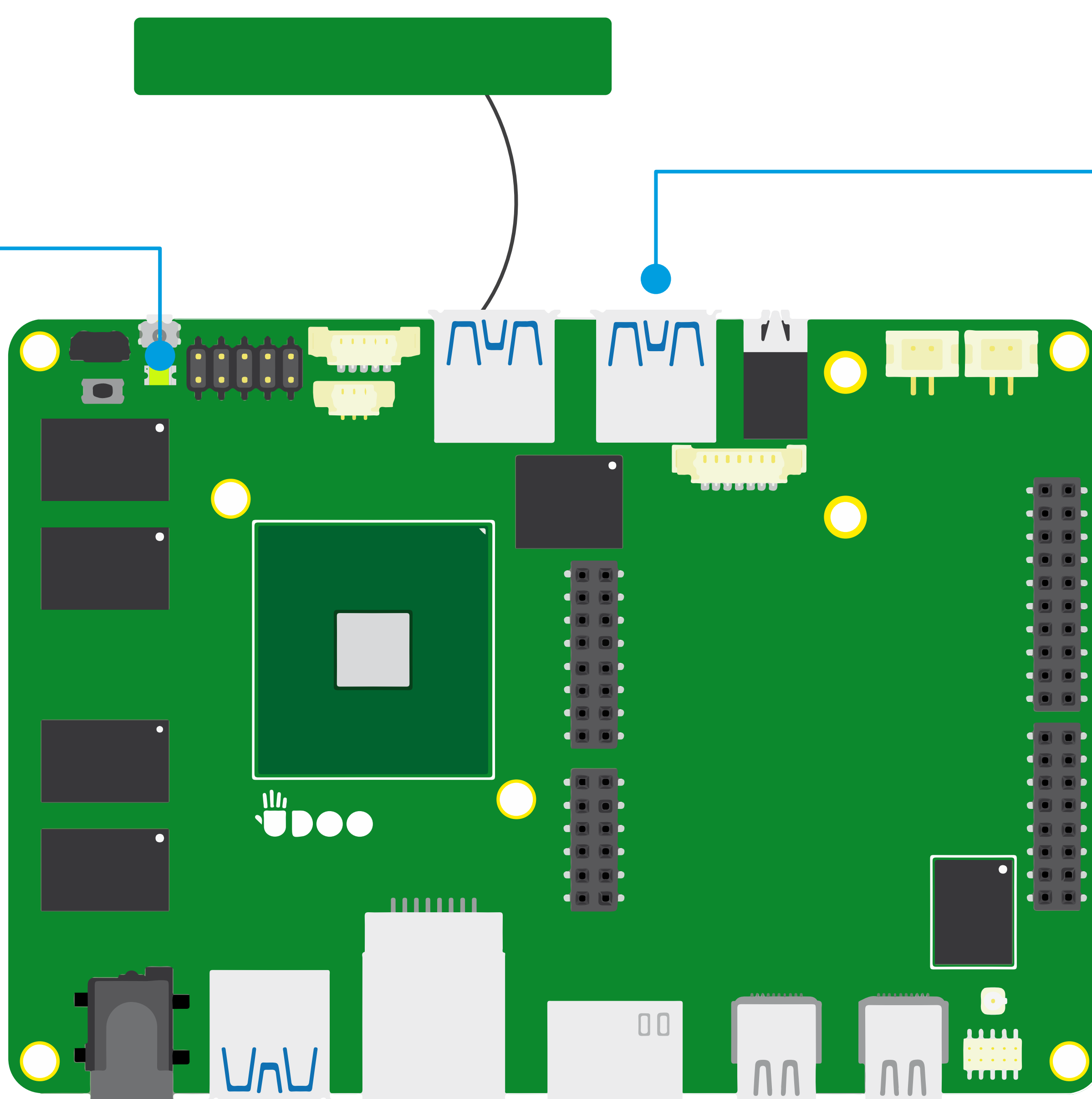
3 Prepare your board

4. If your board is booted correctly this light turns green

1. Plug keyboard and mouse

2. Connect your monitor via a HDMI cable

3. Power up the board using a 12V 3A power supply



Your UDOO X86 is now ready to use!

